

Sorry that there was no newsletter last week.

Hopefully, you will have all seen on the app that dates have been published for parents evening. There was an issue with Wagtail class, but that has now been rectified. The dates are not the same for all classes so please check when they are. There are dates for next week and some in February.

120 years old!

The original Mission Grove school building is 120 years old next month. If you have any ideas on ways that we can celebrate this milestone please let me know when you see me or email me at headteacher@missiongrove.org.uk

Appointments

If your child has to attend an appointment please make sure that you are informing the office and not the teachers. The message does not always get passed to the office and that is why your child will not be ready for an appointment. Also, if possible please refrain from booking any on a Friday afternoon when we have enrichment.

STEAM week

It is getting to that time of year again when we will have a week focus on STEAM. Further in the newsletter and on the side of this page I have written a list of jobs linked to S (Science), technology) E (Engineering), A (arts), M (maths) If you or a family member or friend have a job in any of these fields and think you could either come and talk to classes of children or do an activity with them please let your child's class teacher know.

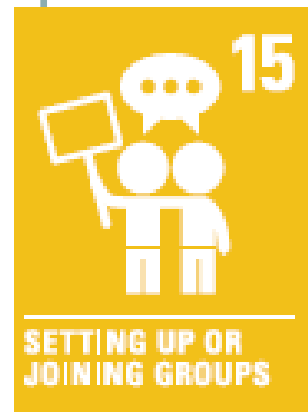
PE Kits

Please make sure that your child is appropriate PE clothes on their PE day. For some lessons the children are asked to go barefoot; yoga and gymnastics.

ATTENDANCE

At parents evening you will be given your child's current attendance certificate. The Government has set the school a target which we are currently not meeting. The guidance from the Government is to fine anyone who goes abroad, no matter what a child's attendance is. Please think carefully about booking holidays abroad during the school holidays.

Miss Jennings—Headteacher



Examples of jobs for STEAM week. See latter in the newsletter for other roles.

Mathematics

- Statistician
- Actuary
- Mathematician
- Operations Research Analyst
- Quantitative Analyst
- Data Analyst
- Financial Analyst

Engineering

- Mechanical Engineer
- Electrical Engineer
- Civil Engineer
- Aerospace Engineer
- Biomedical Engineer
- Robotics Engineer
- Chemical Engineer
- Environmental Engineer

SPECIAL DATES

ATTENDANCE PERCENTAGE BY CLASS

Form	%
Nursery North AM	78.59%
Nursery North PM	81.79%
R Grouse	83.95%
2yr North AM	84.44%
2yr North PM	84.82%
R Goose	84.89%
Nursery North Full Time	86.63%
2 Mallard	88.81%
Nursery South AM	90.23%
5 Swan	90.52%
4 Wagtail	90.77%
R Goldfinch	91.01%
4 Woodpecker	91.26%
4 Wren	91.48%
1 Chaffinch	91.68%
3 Kittiwake	91.89%
2 Merlin	92.17%
1 Chiff Chaff	92.31%
2 Magpie	92.54%
5 Sparrow	92.63%
6 Barn Owl	92.70%
1 Crow	92.80%
4 Waxwing	92.85%
R Goldcrest	93.20%
1 Cuckoo	93.45%
5 Skylark	94.10%
6 Buzzard	94.10%
3 Kingfisher	94.22%
6 Blackbird	94.37%
Nursery South PM	94.38%
5 Swallow	94.51%
3 Kinglet	94.84%
3 Kestrel	95.03%
Nursery South Full Time	95.92%
2 Moorhen	96.12%

January 2026 Article 27—Food clothing, a safe home

- 26th Buzzard swimming all week
- 27th PTA meeting 9am North site
- 27th Gymnastics KS1 competition
- 28th Kestrel @National History museum
- 29th Kittiwake & Kinglet @NHM Parent Evening
- 30th KS1 TriGolf competition

February 2026 Article 15—to meet with friends & join groups/ clubs

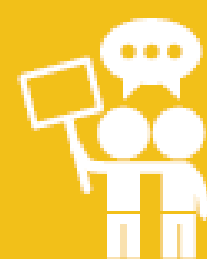
- 2nd year 6 cycling starts
Step counting week
- 3rd Year 6 energy Garden workshop
Year 5 visiting British Museum
Goose & Goldcrest @ transport museum
YEAR 6 COME DINE WITH ME
- 5th Year 4 energy Garden workshop
Full Governors
- 6th Wren Assembly
Dodgeball festival year 5 & 6
- 9th Goose class stay & Play
Last week of clubs
- 10th Goldfinch @ Pumphouse
Goldcrest stay & play
- 11th Goose stay and play

27



FOOD, CLOTHING,
A SAFE HOME

15



SETTING UP OR
JOINING GROUPS

Half Term Holiday Club

This will be running for the full week. The application form is on the website.

The half term is from Monday 16th to Friday 20th February.

The club is held on the North site.

Please visit the website to complete the application form for a place.

[Mission Grove Primary School - Holiday Club](#)



At Mission Grove, everyone aims high, everyone is included, and creativity is valued.

We live our motto: *Respect yourself, respect others.*

Our values guide us—respect, inclusion, life-long learning, high aspirations, resilience, and integrity.

Dates for our NHS drop-in n
the North Site, 9.30am start:

5 February 2026

19 March 2026

23 April 2026

7 May 2026

11 June 2026

9 July 2026

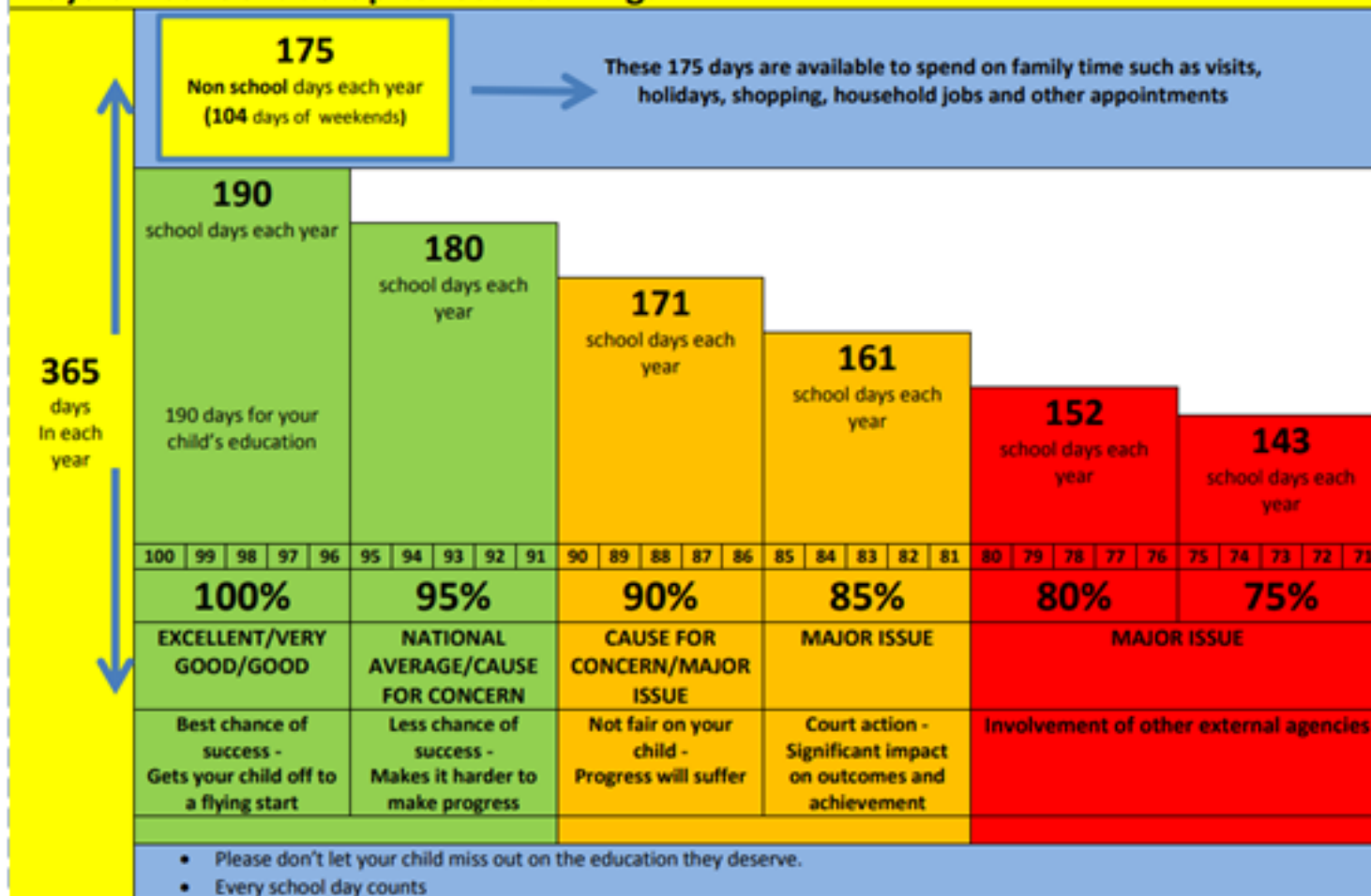


BETT Extravagancer

Today, we visited the Betts Show at the Excel Centre. 11 children were selected by their teachers for exceptional skills on computing and technology. We visited many stands, including LegoEducation, Class VR, TTS, SensoryJunction etc. The children got to experience new mechanical toys, meet a Robot Dog, and code Robots to move. It was a great day out and the children left with great big smiles on their faces!



Days off school add up to lost learning!



Here are some basic reminders about attendance.

- We all feel in our comfort zone if our child is achieving a high percentage in tests and examinations. 80% in a test is generally excellent news! The danger is that we may feel the same way about attendance until it is explained.
- If a child has an attendance percentage of **80%** then this is equivalent to **missing a whole day every single week**
- If a child has an attendance percentage of **80%** from **Year 7 to Year 11** then this is equivalent to **missing an entire year of school**.

One year in school is equivalent to **950** 1 hour long lessons
 Five years in school is equivalent to **4750** 1 hour long lessons
 Eleven years in school is equivalent to **10450** 1 hour long lessons
 And all of this comes down to set of grades on a sheet of paper in an envelope

Attendance %	Missed Days	Missed weeks	Over 5 years	Annually	Impact over 5 years
100%	0	0	0	Excellent	
99%	1.9	0.38	9.5	Very Good	
98%	3.8	0.76	19	Very Good	
97% ¹	5.7	1.14	28.5	Very Good	
96%	7.6	1.52	38	Good	
95% ²	9.5	1.9	47.5	National average	Quarter Year missed
94%	11.4	2.28	57	Below Nat. average	
93%	13.3	2.66	66.5	Below Nat. average	Approx. Third year missed
92%	13.3	2.66	66.5	Requires improvement	
91%	17.1	3.42	85.5	Requires immediate improvement/worrying	
90% ³	19	3.8	95	Cause for concern	Half year missed
89%	20.9	4.18	104.5	Serious concern	
85% ⁴	28.5	5.7	142.5	Major issue	
80% ⁵	38	7.6	190	Major issue	1 Year missed

The world is full of kind people. If you can't find one, be one.



Shouting & swearing will not be tolerated anywhere in school.

Help us create a safe and happy environment for everyone. Think before you shout or get angry with staff.
RESPECT YOURSELF, RESPECT OTHERS!



Year 5 & 6 Choir @ O2

37 children, myself, Mr Osborne, Miss Becky and Ayla's mum ventured to the O2 on a wet and windy Tuesday. We had a great time rehearsing throughout the afternoon with 8,000 other children and then performing on the evening. It was a late return, with us only getting back to school at 10.30!





JOBS for STEAM week



Science

- Biologist
- Chemist
- Environmental Scientist
- Forensic Scientist
- Medical Researcher
- Pharmacologist
- Neuroscientist
- Data Scientist
- Food Scientist



Technology

- Software Developer / Engineer
- Web Developer
- App Developer
- Cybersecurity Analyst
- IT Support Specialist
- Cloud Engineer
- AI / Machine Learning Engineer
- Game Developer
- UX/UI Designer



Arts (the "A" in STEAM)

- Graphic Designer
- Animator
- Industrial Designer
- Product Designer
- Architect
- Fashion Designer
- Game Artist
- Digital Illustrator
- Creative Technologist

MISSION GROVE SCHOOL

PTA MEETING

Tuesday 27th
January

9AM NORTH SITE





Winter warmer Pop-up

Tuesday 27 January, 3pm - 4pm

Outside the entrance of Salisbury Manor
Primary School

Drop in to Peabody's Pantry
pop-up stall

- **Collect a £2 food package***
- **Pick up back to school supplies**
- **Learn more about local services**

**No sign up
needed, just
drop in!**

*We can only accept £2 in cash, one package per
household, limited number of packages available

For more information, please contact:
Douglas Mohammad on 077 7927 8624

A man with grey hair, wearing a dark green jacket, is smiling and holding out several red apples with both hands. He is standing in front of a bright green van. The van has the word 'Felix' written in large white letters on its side. On the front of the van, the words 'FELIX PROJECT' and 'AND CAUSES' are visible. A yellow diagonal banner is overlaid on the top right of the image.

FREE FOOD
Just bring bags!

FELIX FRESH

The Felix Project, in partnership with BETTER, will be distributing free fresh fruit and vegetables.

WHEN

Tuesday 27th
January
1-3pm

WHERE

Walthamstow Leisure Centre,
243 Markhouse Rd, E17 8RN
W3W [///clubs.models.such](http://clubs.models.such)

BRING YOUR BAGS, BOXES, TROLLEYS AND STRONG ARMS, AND TAKE HOME WITH YOU A VARIETY OF DELICIOUS, FRESH FOOD!

Felix | THE
FELIX
PROJECT

